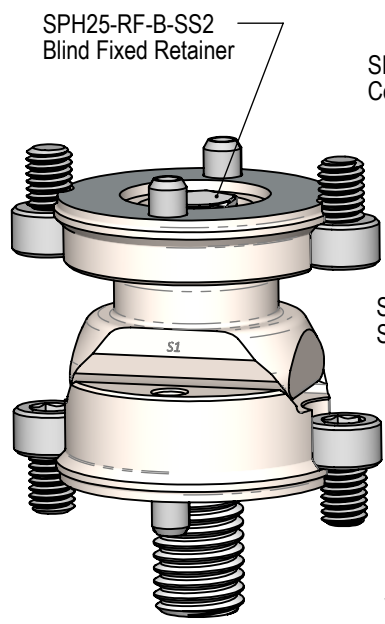
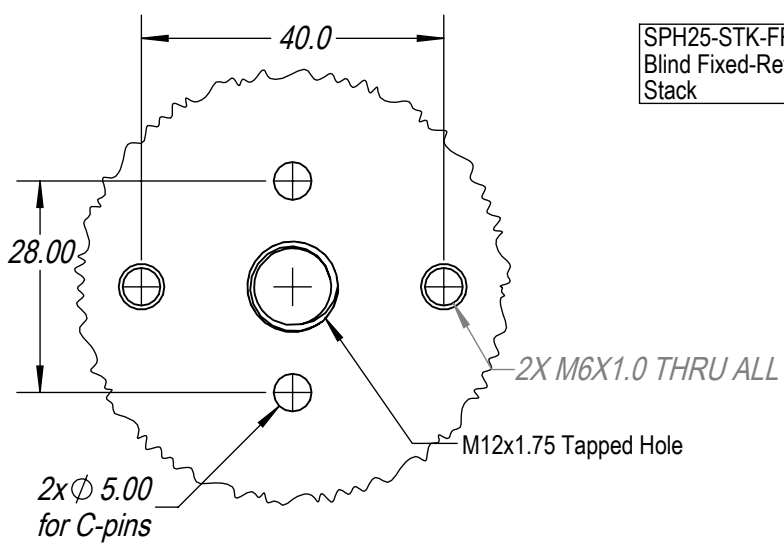
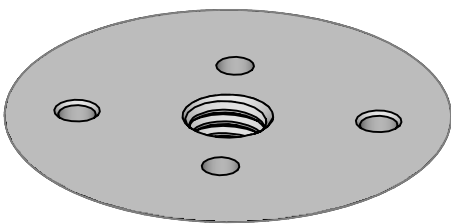
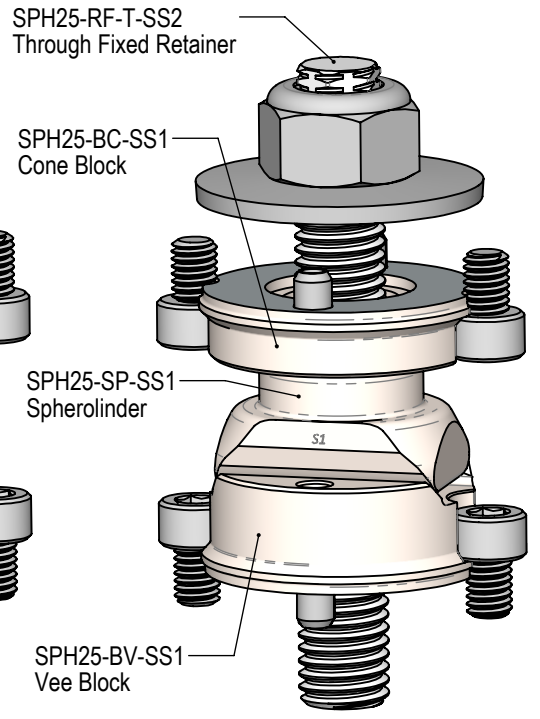


Standard flat interface
(shear carried by C pins)



SPH25-STK-FR-B
Blind Fixed-Retainer
Stack



SPH25-STK-FR-T
Through Fixed-Retainer
Stack

© 2025

g2 Engineering

16991 McGill Rd, Saratoga, CA 95070 650-605-4500 inbox@g2-engineering.com

TITLE
SPH25-STK-FR(F) Fixed Retainer Stack (Flat)

Ver.

mm DATE 3/17/2026 1:46:04 PM Eng BLH

MATERIAL Stainless 440c, 17-4PH SURFACE TREATMENT ---

SCALE 1:1 SHEET 1 OF 1